

METADATA DATABASE BUILD-UP AND MANAGEMENT IN DGM OF LAO PDR.

BY

Inpong HOMSOBATH



Phnom Penh, Cambodia 15-16 March 2012

Coordinating Committee for Geoscience Programmes in East and Southeast Asia (CCOP)

Outline

I. THE EXISTING DIGITAL DATA SETS

II.PILOT AREA OF LAOGDB

**III.DATA ENCODING AND
MANAGEMENT**

IV.CHALLENGES AND SOLUTION

I. EXISTING DIGITAL DATA SETS

The existing digital data sets are collected into the Lao Geological Database(LAOGDB) hosted at the Department of Geology and Minerals

II. PILOT AREA OF LAOGDB

- (1) BASE DATA.**
- (2) GEODATA.**
- (3) MINING CADASTRE.**
- (4) OIL AND GAS DATA.**
- (5) DIGITAL REPORT LIBRARY.**

III. DATA ENCODING AND MANAGEMENT

(1) BASEDATA

Database of GIMS in using

- **Topographical map (1:100 000 scale)**
- **Administrative borders \ • Land use**
- **Digital elevation model**
- **Contours**
- **Rivers**
- **Lakes**
- **Roads (classified)**
- **Small objects (village, schools, etc**
- **Protection area**
- **Map sheet divisions (all data combine by MapInfo and ArcGIS software)**

(2) GEODATA

The Geodata includes geological map (many format)

- . 1:1M scale geological map with structures**
- . 1:500 000 scale geological map with structure from Southern Laos (9 map sheets)**
- . 1:200 000 scale geological map with structure from Mid-Lao (8 map sheets)**
- . 1:200 000 scale geological map with structure from Northern-Lao (15 map sheets)**
- . 1:200 000 scale geological map with structure from Vientiane sheets**
- . 1:100 000 scale geological map with structure (28 map sheets) soil map**
- . Mineral deposit database**

(3) MINING CADASTRE

**The Mining Cadastre consists
The area layers Complemented
with related attribute data tables**

- Prospecting Area**
- Exploration Area**
- Exploitation Area**

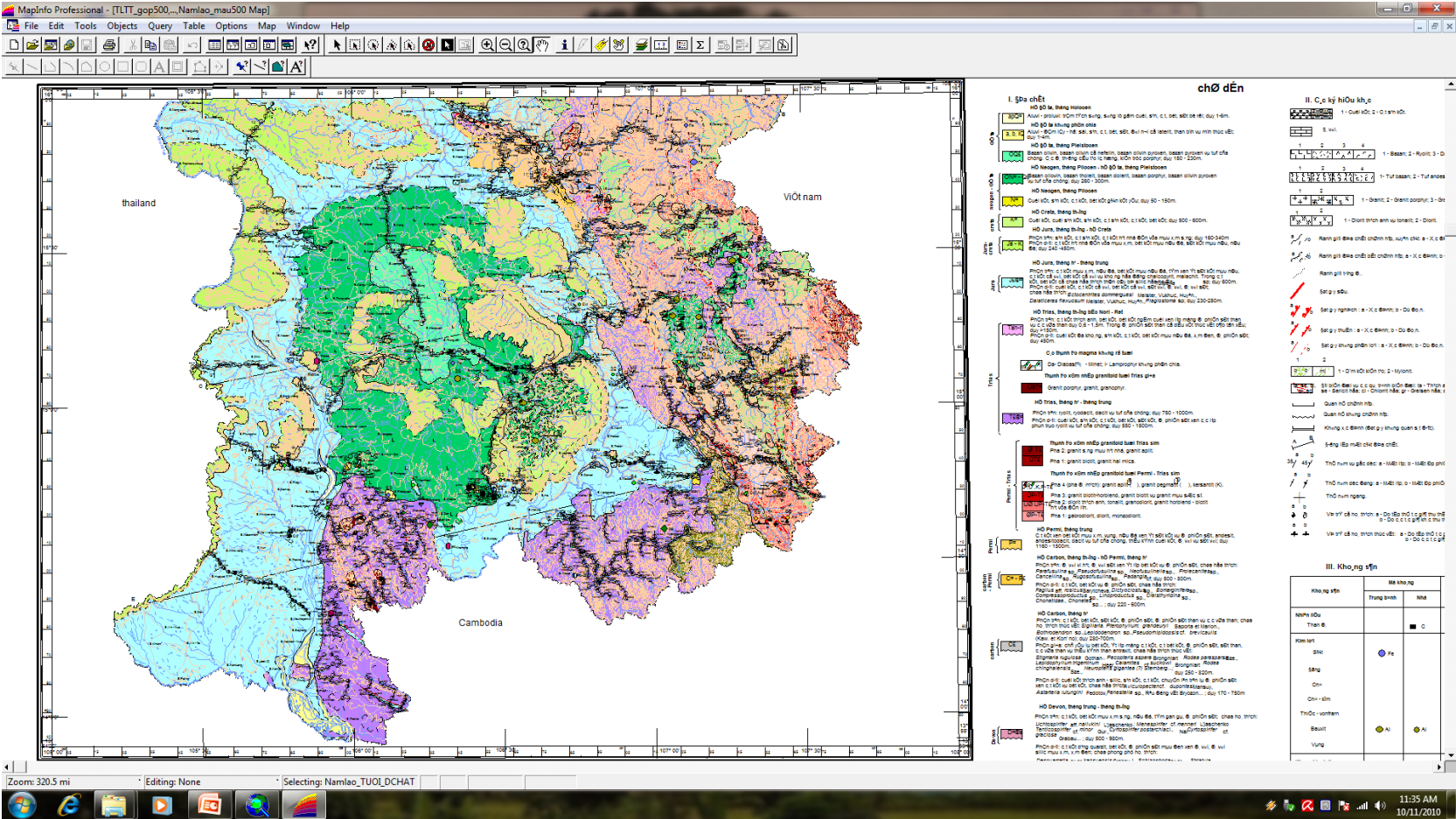
(4) OIL AND GAS DATA.

- . Exploration report and maps**
- . Drilling report and maps**
- . Magnetic taps**
- . CD, DVD**

(5) DIGITAL REPORT LIBRARY.

- . Was developed by compiling the existing digital geological reports**
- . Several hard-copy reports of which some were available at DGM only as one copy**
- . These reports, representing the key publications on geology of Lao PDR**

Completed convert from MapInfo to ArcGIS Cooperation project covered by 4 provinces (Southern park of Lao) at scale 1:500 000



III CHALLENGES AND SOLUTION

1. Challenges:

- . The base data, original map produced in Vientiane 82 coordinate system.**

Digitized by NGD

- . Many format in the geodata on mapInfo format transfer into ArcGIS shape file and upgraded to Laonat 96 & to WGS 84**

- . Problem: Now several coordinate System in the use often coordinate system is not defined or wrongly defined**

2. Solution.

- **Have uniform database and one coordinate system used by all at all data**

THANK YOU !